

NPT SERIES CASTOR

REVOLUTION IN EVOLUTION



Facing economic crunch worldwide, many manufacturers resort to price cut to stay afloat. This practice, however often ended with corners cut, and quality compromised. Quite the opposite, Catis takes a different course. One after another, old faithful castors are screened for face-lift and upgrading.

Evolution is no longer a privilege term exclusive to the biological world, and neither is a theory in Catis where new products do evolved from their older counterparts. In a strict sense, Catis NPT castor ① is bred from the classic Polytech Castor which under all circumstances has served the world faithfully for more than a decade. Following the company's guiding principle, "Looking for Better Solutions", NPT up its ante with a slim down body accompanied by a smacking new lock design. Employing new plastic technology, NPT retains its rigidity and shed almost 30% weight from its predecessor. ② While the shell is remolded to be more flashy and compact, its ergonomics facilitates user with handling ease during installation. ③



Yet the beauty of NPT is not shell deep. Putting motion to a halt, the wheel is pressured to a standstill by one toothless stainless steel plate. ④ It is molded to bifurcate in the middle and to the curvature of the wheel, inducing maximum friction with no contact to the tread center at the same time.

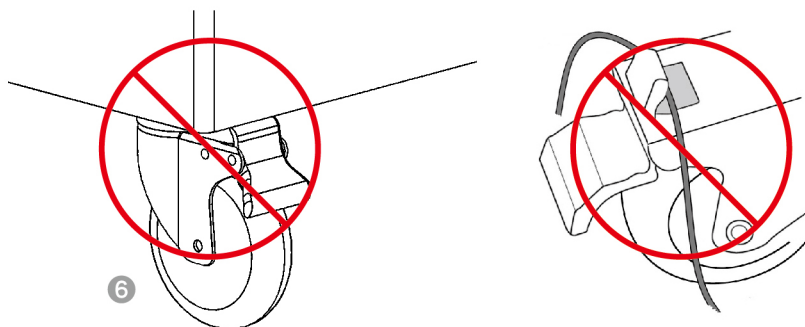


Boldly said, no flat spot, no brake burn and long live the wheel! While being more stable, using metal instead of plastic brake mechanism reduces noise significantly. Now, to actuate this stopping power, is a pair of brake pedals (ON/OFF). On release, the 2 pads rest in tandem forming an almost seamless surface accentuating its clean profile . 5



All it takes is slight pressure to freeze the wheel and a single tab to free it. No kicking or pounding on the pedals for stop and go, and no shoe caught by the undercarriage.

Last but not least, the brake pads are designed and shaped to move dangling objects away from the binders. Common complaint with wire, catheter tubing and cable strangled by brake pedals becomes a non-issue. 6



Certainly, no renovation worth a dime if few could afford it. To this, Catis has bent over backwards to make sure the new NPT castor is widely affordable.

When it comes to plastic castor, NPT is a breed apart. Call us and personally experience how wonderful it works at service@catis.com.tw

For specifications, see the following pages.

SPECIFICATION



P Top Plate Fitting

Glass fiber reinforced Nylon 6 for body and brake pedals, precision ball bearings at swivel head and wheel axle. Non-marking, thermoplastic rubber tread.



Total locking

Catis code	mm	mm		Fitting	mm	mm	mm	kg	Shore A	kg
NPT100BP1/G	100	25	●●	P1	35	136	116	80.0	70±5	0.59
NPT100BP2/G	100	25	●●	P2	35	136	116	80.0	70±5	0.59
NPT125BP1/G	125	30	●●	P1	44	162	128	100.0	70±5	0.73
NPT125BP2/G	125	30	●●	P2	44	162	128	100.0	70±5	0.73

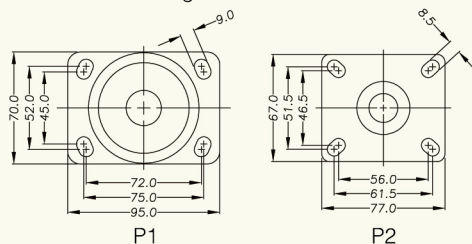
Directional locking

Catis code	mm	mm		Fitting	mm	mm	mm	kg	Shore A	kg
NPT100D1P1/G	100	25	●●	P1	35	136	116	80.0	70±5	0.59
NPT100D1P2/G	100	25	●●	P2	35	136	116	80.0	70±5	0.59
NPT125D1P1/G	125	30	●●	P1	44	162	128	100.0	70±5	0.73
NPT125D1P2/G	125	30	●●	P2	44	162	128	100.0	70±5	0.73

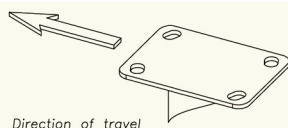
Free swivel

Catis code	mm	mm		Fitting	mm	mm	mm	kg	Shore A	kg
NPT100P1/G	100	25	●●	P1	35	136	99	80.0	70±5	0.56
NPT100P2/G	100	25	●●	P2	35	136	99	80.0	70±5	0.56
NPT125P1/G	125	30	●●	P1	44	162	110	100.0	70±5	0.69
NPT125P2/G	125	30	●●	P2	44	162	110	100.0	70±5	0.69

- Durometer of tire
- Load Capacity as determined per EN12526 to EN12533, Load Capacity / Per Castor (kg)
- Precision ball bearing



- Conductive wheels are also available. Add "-KAS" suffix to Catis code, e.g. NPT100BP1/G-KAS
- Stainless steel castors are also available. Add "-SS" suffix to Catis code, e.g. NPTE100BP1SS/G



Directional Locking Castor

Unless requested otherwise, directional locking castor with top plate fitting should be installed with the longer length parallel to the direction of travel.



T Threaded Stem Fitting

Glass fiber reinforced Nylon 6 for body and brake pedals, precision ball bearings at swivel head and wheel axle. Non-marking, thermoplastic rubber tread.



Total locking

Catis code	mm	mm		Fitting	mm	mm	mm	kg	Shore A	kg
NPT100BT2/G	100	25	●●	T2	35	136	116	80.0	70±5	0.49
NPT100BT3/G	100	25	●●	T3	35	136	116	80.0	70±5	0.49
NPT100BT4/G	100	25	●●	T4	35	136	116	80.0	70±5	0.49
NPT100BT5/G	100	25	●●	T5	35	136	116	80.0	70±5	0.49
NPT125BT2/G	125	30	●●	T2	44	162	128	100.0	70±5	0.65
NPT125BT3/G	125	30	●●	T3	44	162	128	100.0	70±5	0.65
NPT125BT4/G	125	30	●●	T4	44	162	128	100.0	70±5	0.65
NPT125BT5/G	125	30	●●	T5	44	162	128	100.0	70±5	0.65

Directional locking

Catis code	mm	mm		Fitting	mm	mm	mm	kg	Shore A	kg
NPT100D1T55/G	100	25	●●	T55	35	136	116	80.0	70±5	0.49
NPT125D1T55/G	125	30	●●	T55	44	162	128	100.0	70±5	0.65

Free swivel

Catis code	mm	mm		Fitting	mm	mm	mm	kg	Shore A	kg
NPT100T2/G	100	25	●●	T2	35	136	99	80.0	70±5	0.45
NPT100T3/G	100	25	●●	T3	35	136	99	80.0	70±5	0.45
NPT100T4/G	100	25	●●	T4	35	136	99	80.0	70±5	0.45
NPT100T5/G	100	25	●●	T5	35	136	99	80.0	70±5	0.45
NPT125T2/G	125	30	●●	T2	44	162	110	100.0	70±5	0.60
NPT125T3/G	125	30	●●	T3	44	162	110	100.0	70±5	0.60
NPT125T4/G	125	30	●●	T4	44	162	110	100.0	70±5	0.60
NPT125T5/G	125	30	●●	T5	44	162	110	100.0	70±5	0.60

● Durometer of tire

● Load Capacity as determined per EN12526 to EN12533, Load Capacity / Per Castor (kg)

●● Precision ball bearing

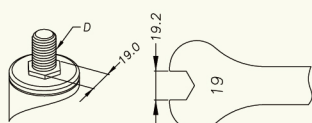
Code Dimension

T2 1/2-13UNC×1

T3 M10×25mm P=1.5

T4 M12×25mm P=1.75

T5 M16×25mm P=2.0



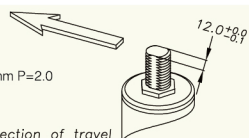
Conductive wheels are also available.

Add "-KAS" suffix to Catis code, e.g. NPT100BT4/G-KAS

Stainless steel castors are also available.

Add "-SS" suffix to Catis code, e.g. NPTE100BT4SS/G

T55
M16×25mm P=2.0



Direction of travel

Directional Locking Castor

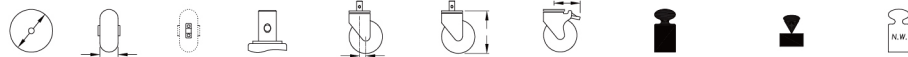
Unless requested otherwise, directional locking castor with threaded stem fitting should be installed with two shaved sides of the stem parallel to the direction of travel.

SPECIFICATION



R Round Stem Fitting

Glass fiber reinforced Nylon 6 for body and brake pedals, precision ball bearings at swivel head and wheel axle. Non-marking, thermoplastic rubber tread.



Total locking

Catis code	mm	mm		Fitting	mm	mm	mm	kg	Shore A	kg
NPT100BR8/G	100	25	●●	R8	35	136	116	80.0	70±5	0.52
NPT100BR9/G	100	25	●●	R9	35	136	116	80.0	70±5	0.52
NPT100BR63/G	100	25	●●	R63	35	136	116	80.0	70±5	0.52
NPT125BR8/G	125	30	●●	R8	44	162	128	100.0	70±5	0.67
NPT125BR9/G	125	30	●●	R9	44	162	128	100.0	70±5	0.67
NPT125BR63/G	125	30	●●	R63	44	162	128	100.0	70±5	0.67

Directional locking

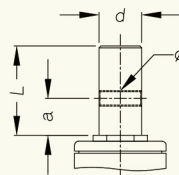
Catis code	mm	mm		Fitting	mm	mm	mm	kg	Shore A	kg
NPT100D1R8/G	100	25	●●	R8	35	136	116	80.0	70±5	0.52
NPT100D1R9/G	100	25	●●	R9	35	136	116	80.0	70±5	0.52
NPT100D1R63/G	100	25	●●	R63	35	136	116	80.0	70±5	0.52
NPT125D1R8/G	125	30	●●	R8	44	162	128	100.0	70±5	0.67
NPT125D1R9/G	125	30	●●	R9	44	162	128	100.0	70±5	0.67
NPT125D1R63/G	125	30	●●	R63	44	162	128	100.0	70±5	0.67

Free swivel

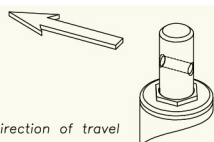
Catis code	mm	mm		Fitting	mm	mm	mm	kg	Shore A	kg
NPT100R8/G	100	25	●●	R8	35	136	99	80.0	70±5	0.47
NPT100R9/G	100	25	●●	R9	35	136	99	80.0	70±5	0.47
NPT100R63/G	100	25	●●	R63	35	136	99	80.0	70±5	0.47
NPT125R8/G	125	30	●●	R8	44	162	110	100.0	70±5	0.63
NPT125R9/G	125	30	●●	R9	44	162	110	100.0	70±5	0.63
NPT125R63/G	125	30	●●	R63	44	162	110	100.0	70±5	0.63

- Durometer of tire
- Load Capacity as determined per EN12526 to EN12533, Load Capacity / Per Castor (kg)
- Precision ball bearing

Code	d	L	a	Ø
R8	22.0	45.0	19.0	M8×1.25
R9	28.0	45.0	19.0	M8×1.25
R63	18.0	28.0	19.0	M8×1.25



- Conductive wheels are also available. Add "-KAS" suffix to Catis code, e.g. NPT100BR8/G-KAS
- Stainless steel castors are also available. Add "-SS" suffix to Catis code, e.g. NPTE100BR8SS/G



Directional Locking Castor

Unless requested otherwise, directional locking castor with round stem fitting should be installed with retaining hole along the direction of travel.

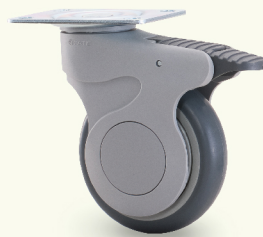
Note

Changes to listed specifications can be arranged to suit special requirements, such modifications largely depend on the size of orders.

All specifications and dimensions are accurate for present production but subject to change without notice.

NPT series come in two standard colors, Gray(RAL7001), and White(RAL9010).

Serial numbers are listed for Gray color only; if White color is desired, please replace the last letter (color code) "G" with "W".



Gray Color



White Color



BetterSolutions



14F, No. 29-2, Sec. 2, Jungjeng E. Rd.,
Tamshui Dist., New Taipei City, Taiwan 251
Tel No.+886-2-8809-5011
Fax No.+886-2-8809-5015
E-mail : service@catis.com.tw
<http://www.catis.com>